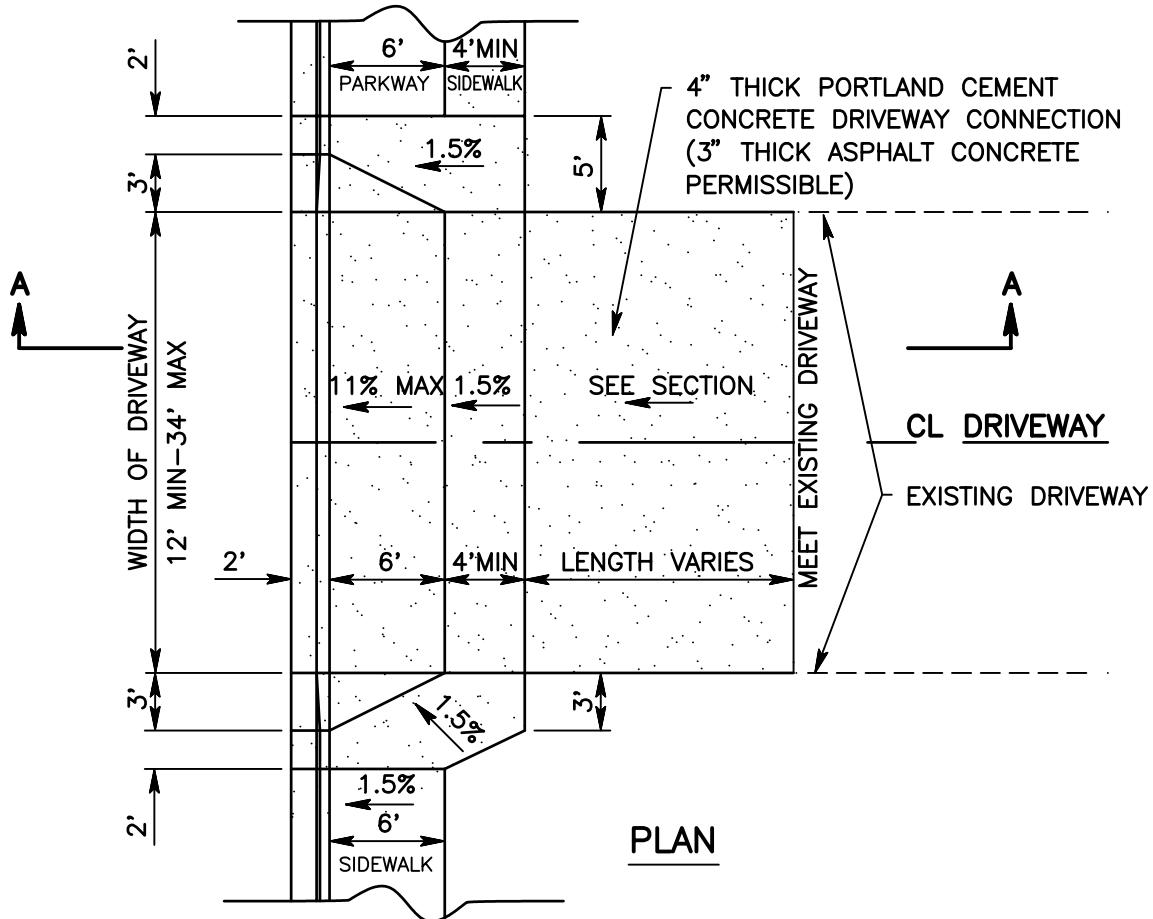


AC = ASPHALT CONCRETE
 CL = CENTER LINE
 GB = GRADE BREAK
 MAX = MAXIMUM
 MIN = MINIMUM
 PCC = PORTLAND CEMENT CONCRETE
 R/W = RIGHT OF WAY
 TC = TOP OF CURB
 VAR = VARIES

SECTION A-A



NOTES:

1. FOR APPLICABLE NOTES AND DRIVEWAY REQUIREMENTS SEE STANDARD 130.
2. TO CONSTRUCT A DEPRESSION IN EXISTING CURB AND GUTTER:
 - A) SAWCUT AND REMOVE FOR THE NECESSARY WIDTH.
 - B) REMOVE AND RECONSTRUCT TO THE NEAREST JOINT.
3. A DRIVEWAY APPROACH MUST BE CONSTRUCTED WITH EACH CURB DEPRESSION.
4. SURFACING SHALL BE PORTLAND CEMENT CONCRETE (MINOR CONCRETE) 4" THICK AND HAVE A BROOM FINISH.



SAN BERNARDINO COUNTY DEPARTMENT OF PUBLIC WORKS

RESIDENTIAL DRIVEWAY APPROACH WITH CURB

BRENDON P. BIGGS, PE
 DIRECTOR OF PUBLIC WORKS/ROAD COMMISSIONER