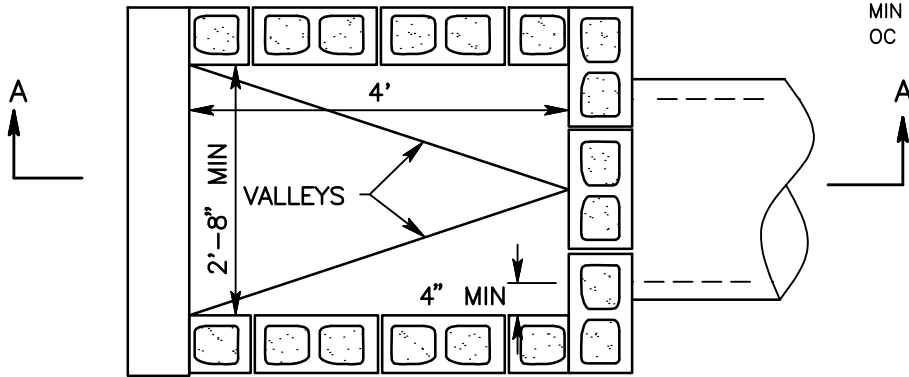
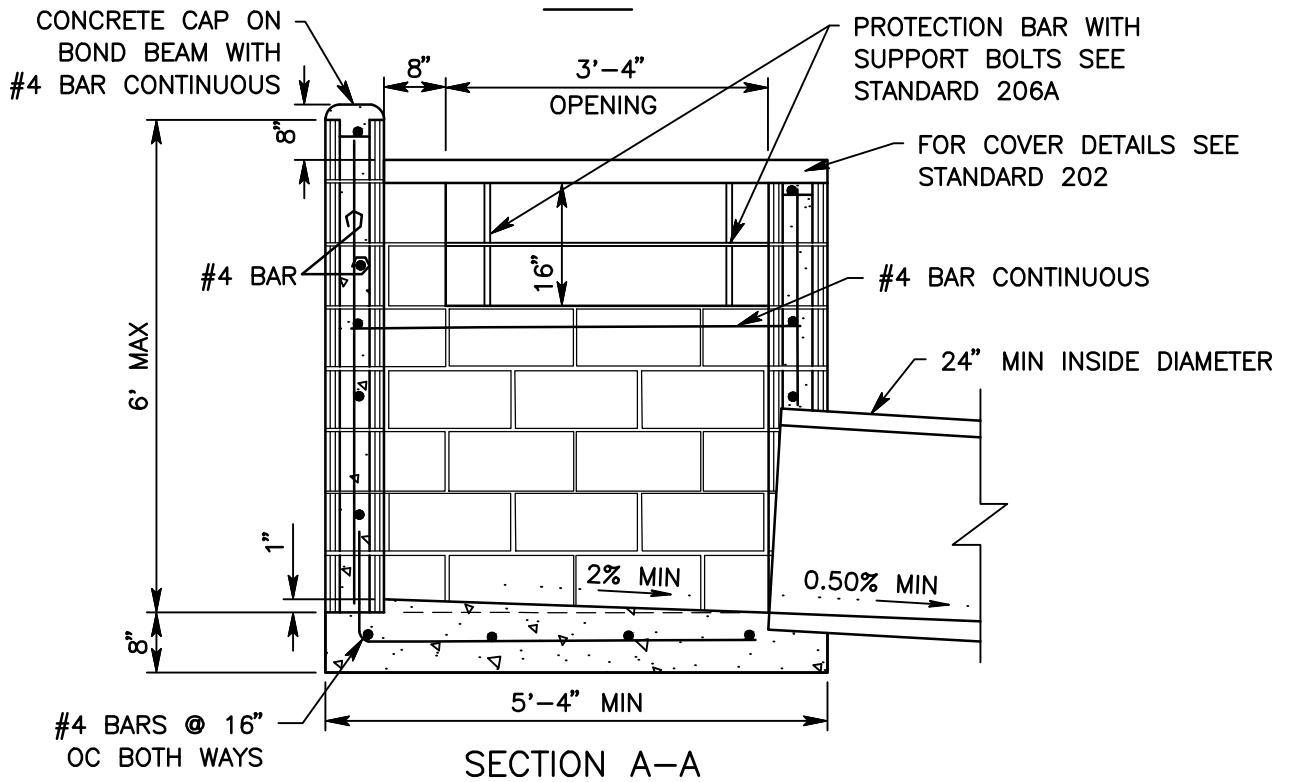


MAX = MAXIMUM
 MIN = MINIMUM
 OC = ON CENTER



PLAN



SECTION A-A

NOTES:

1. 8"x8"x16" CONCRETE BLOCK WITH #4 STEEL BAR AT 16" OC VERTICAL AND 24" OC HORIZONTAL.
2. FILL ALL BLOCKS WITH GROUT.
3. BASE OF CATCH BASIN SHALL BE CONSTRUCTED WITH MINOR CONCRETE.
4. HORIZONTAL STEEL SHALL BE PLACED IN BOND BEAM BLOCKS.



SAN BERNARDINO COUNTY DEPARTMENT OF PUBLIC WORKS

**CATCH BASIN
 MOUNTAIN ROADS**

BRENDON P. BIGGS, PE
 DIRECTOR OF PUBLIC
 WORKS/ROAD
 COMMISSIONER

202A