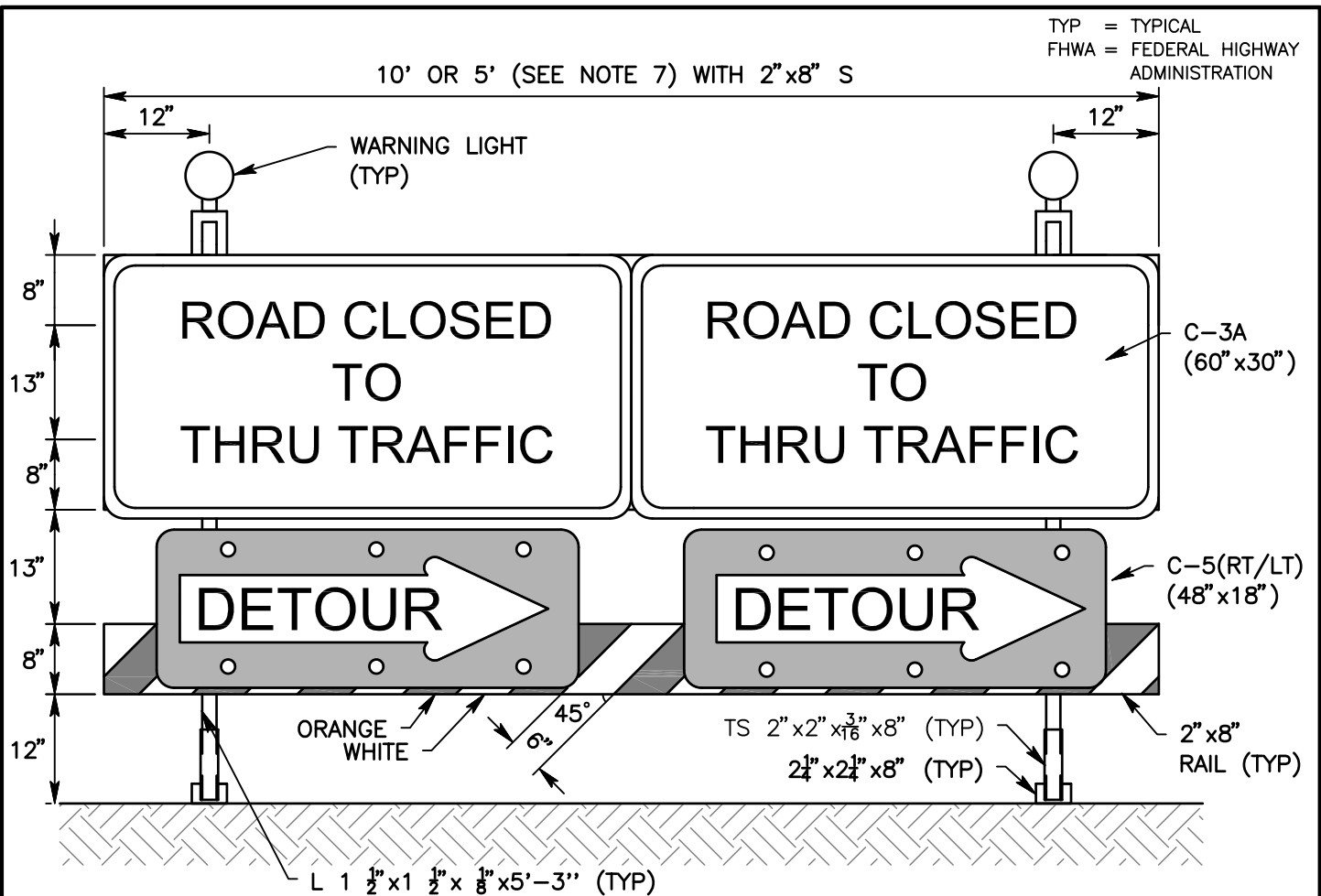
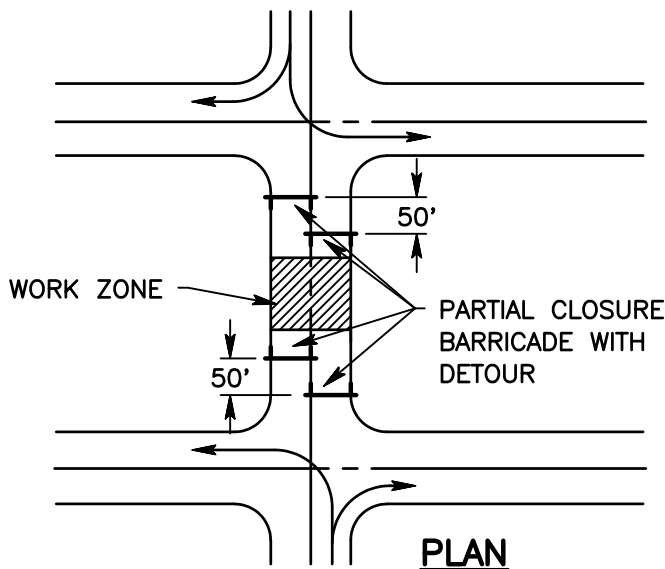


TYP = TYPICAL
 FHWA = FEDERAL HIGHWAY
 ADMINISTRATION



SECTION

NOTES:



1. ALL TIMBER SHALL BE S4S.
2. WHITE AND ORANGE PAINTED STRIPES SHALL BE REFLECTORIZED PER FHWA II (ENGINEERING GRADE SHEETING).
3. TRAFFIC CONTROL DEVICES SHALL BE OF HIGH INTENSITY SHEETING.
4. FOR RAIL TO POST CONNECTION, PROVIDE $2\frac{3}{8}$ " CARRIAGE BOLTS WITH CUT WASHERS AND NUTS.
5. ADVANCE CONSTRUCTION SIGNS ARE REQUIRED.
6. FOR 5' BARRICADE, USE ONLY ONE C-3A AND C-5 MOUNTED AT THE CENTER OF THE ASSEMBLY.
7. FOR 5' BARRICADE, USE ONLY ONE C-2 AND N-2 MOUNTED AT THE CENTER OF THE ASSEMBLY.



SAN BERNARDINO COUNTY DEPARTMENT OF PUBLIC WORKS

**PARTIAL ROAD CLOSURE BARRICADE
 WITH DETOUR**

BRENDON P. BIGGS, PE
 DIRECTOR OF PUBLIC
 WORKS/ROAD
 COMMISSIONER

305E