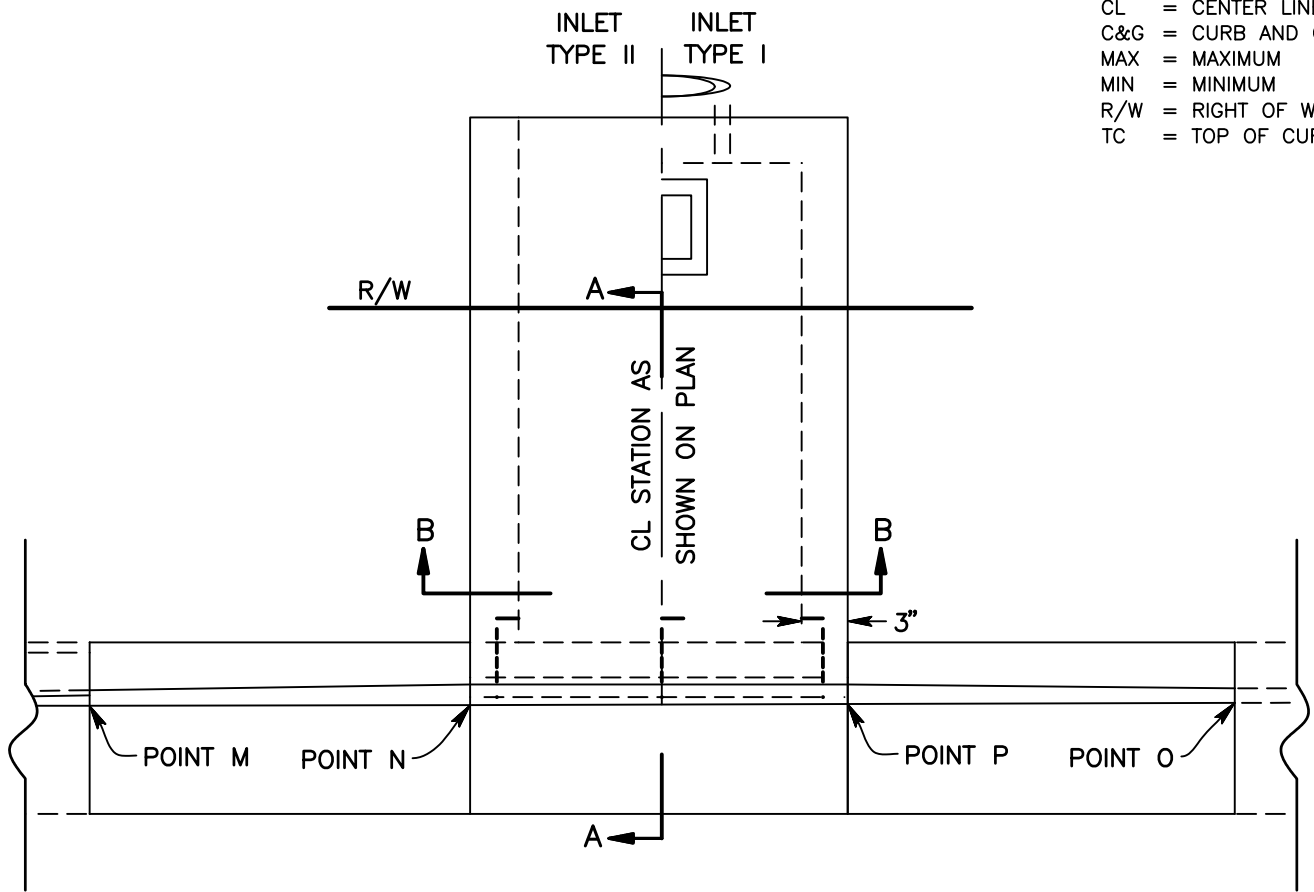
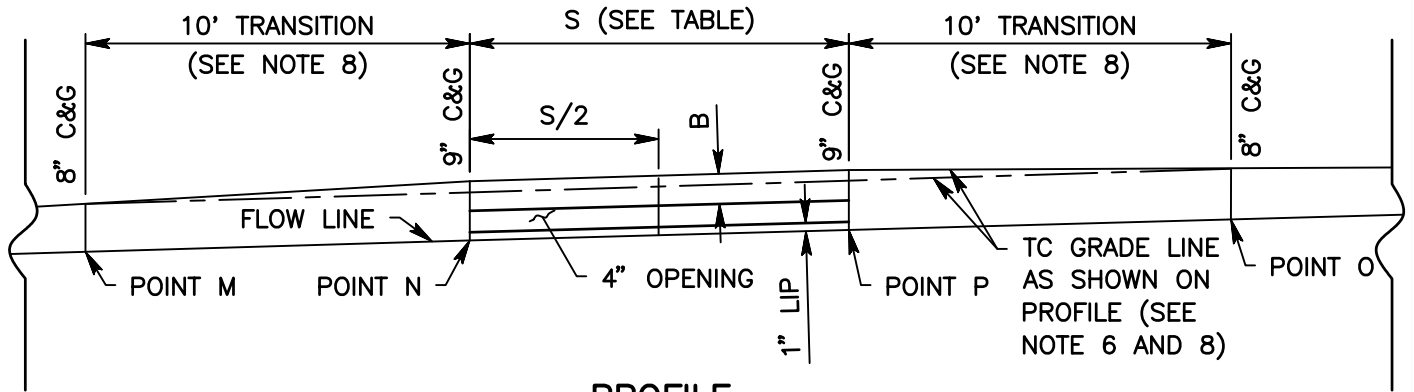


- CL = CENTER LINE
- C&G = CURB AND GUTTER
- MAX = MAXIMUM
- MIN = MINIMUM
- R/W = RIGHT OF WAY
- TC = TOP OF CURB



PLAN



PROFILE

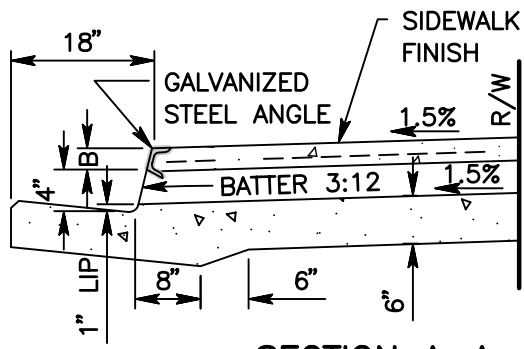


SAN BERNARDINO COUNTY DEPARTMENT OF PUBLIC WORKS

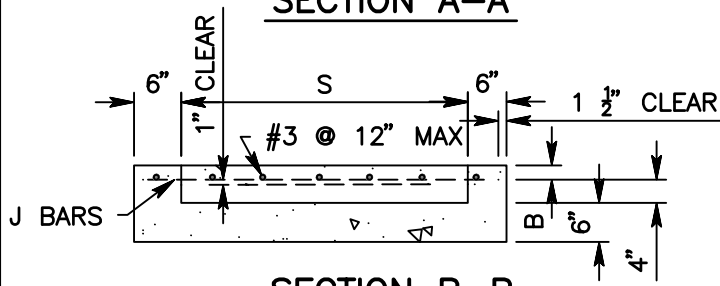
CURB OUTLET STRUCTURE

BRENDON P. BIGGS, PE
DIRECTOR OF PUBLIC
WORKS/ROAD
COMMISSIONER

PIPE PER IMPROVEMENT
OR GRADING PLAN



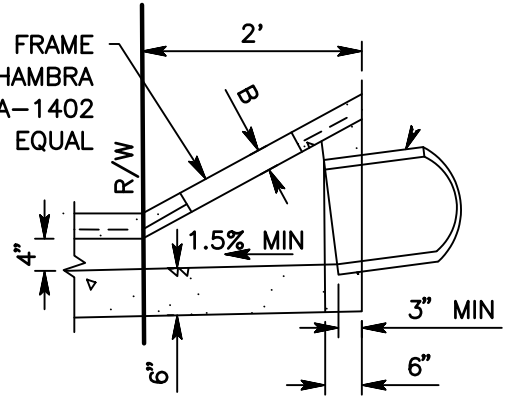
SECTION A-A



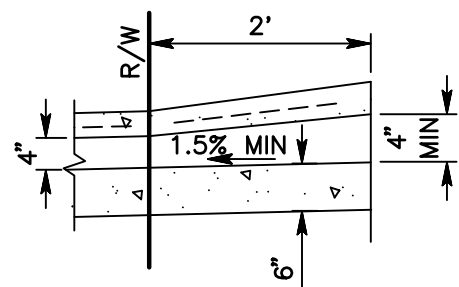
SECTION B-B

S	B	GALVANIZED STEEL ANGLE	ANCHOR	J BAR		
				SIZE	SPACING	LENGTH
1'-0"	3"	2 1/2" x 2' x 3/8"	2	#3	7"	1'-9"
1'-6"	"	"	"	"	"	2'-3"
2'-0"	"	"	"	"	"	2'-9"
2'-6"	"	"	"	"	"	3'-3"
3'-0"	"	"	3	"	"	3'-9"
3'-6"	"	"	"	"	6"	4'-3"
4'-0"	"	"	"	"	5"	4'-9"
4'-6"	4"	3 1/2" x 3' x 1/2"	"	"	6 1/2"	5'-3"
5'-0"	"	"	"	"	5"	5'-9"
5'-6"	"	"	"	"	4"	6'-3"
6'-0"	"	"	"	"	3 1/2"	6'-9"

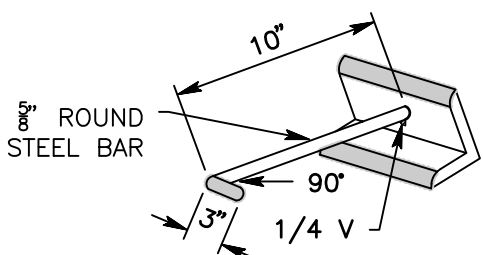
RECTANGULAR FRAME
AND COVER - ALHAMBRA
FOUNDATION A-1402
OR EQUAL



SECTION - INLET TYPE I



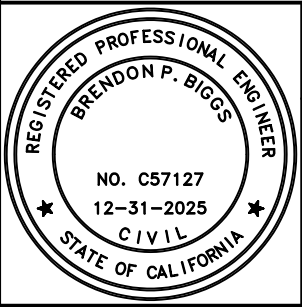
SECTION - INLET TYPE II



DETAIL OF ANCHOR
(SEE NOTES 5 & 7)

NOTES:

1. FLOOR OF BOX TO BE TROWELED SMOOTH.
2. WHEN THE TOE OF SLOPE IS WITHIN THE RIGHT OF WAY LINE, INLET TYPE I BEGINS AT THE TOE, RATHER THAN AT THE RIGHT OF WAY LINE.
3. FOR OPEN DITCH APPROACH (TYPE II) THE 2" OR MORE IS FROM THE RIGHT OF WAY LINE.
4. TOP OF INLET STRUCTURE (TYPE I OR II) TO BE FLUSH WITH ADJACENT SIDEWALK WHERE PRACTICAL.
5. A HEADED STEEL STUD 5/8" x 6 3/8" WITH HEAD 0.1".
6. NORMAL CURB AT POINTS M AND O. B + 5" AT POINTS N AND P, WHEN SPAN IS EQUAL TO ONE FOOT TO FOUR FEET, NO TRANSITION IS NEEDED.
7. THE 3" LEG OF THE INTERIOR ANCHORS SHALL BE PARALLEL TO THE TOP OF SIDEWALK.
8. TRANSITION IS REQUIRED WHEN SPAN IS EQUAL TO OR GREATER THAN 4'-6".



SAN BERNARDINO COUNTY DEPARTMENT OF PUBLIC WORKS

CURB OUTLET STRUCTURE

BRENDON P. BIGGS, PE
DIRECTOR OF PUBLIC
WORKS/ROAD
COMMISSIONER