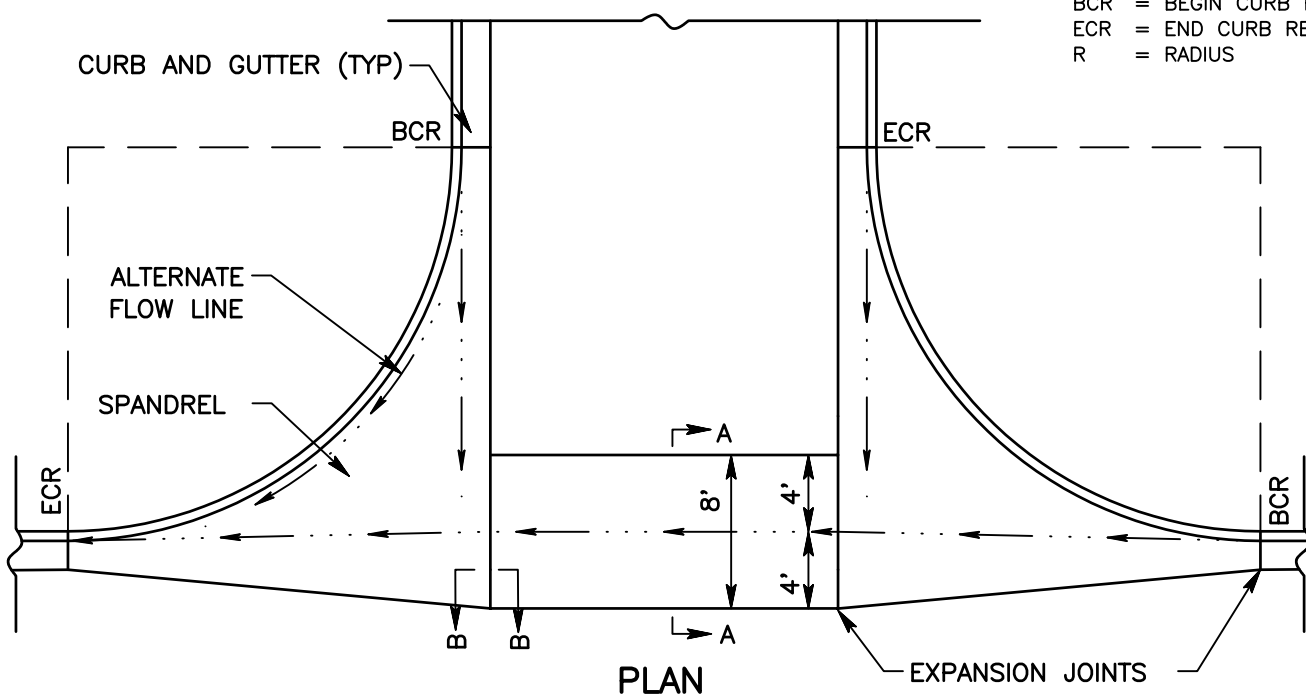
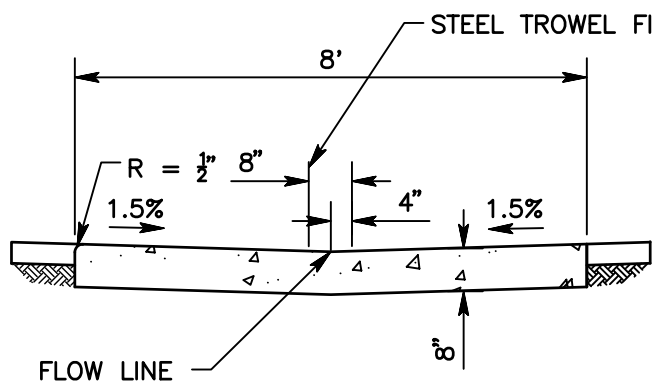


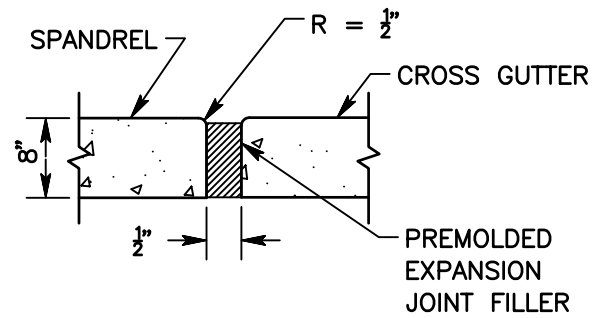
BCR = BEGIN CURB RETURN
 ECR = END CURB RETURN
 R = RADIUS



PLAN



SECTION A-A



SECTION B-B

NOTES:

1. CROSS GUTTER SHALL BE CONSTRUCTED OF MINOR CONCRETE.
2. THE STRAIGHT GRADE BETWEEN BCR'S MAY BE ALTERED ON AN EXCESSIVE GRADE.
3. A 0.3' MINIMUM FALL IS REQUIRED BETWEEN BCR AND ECR, AND CROSS GUTTER FLOW LINE.
4. SPANDREL SHALL BE 8" THICKNESS MINOR CONCRETE.
5. VARIABLE CURB FACE ALLOWED FOR DRAINAGE PURPOSES



SAN BERNARDINO COUNTY DEPARTMENT OF PUBLIC WORKS

CROSS GUTTER

BRENDON P. BIGGS, PE
 DIRECTOR OF PUBLIC
 WORKS/ROAD
 COMMISSIONER