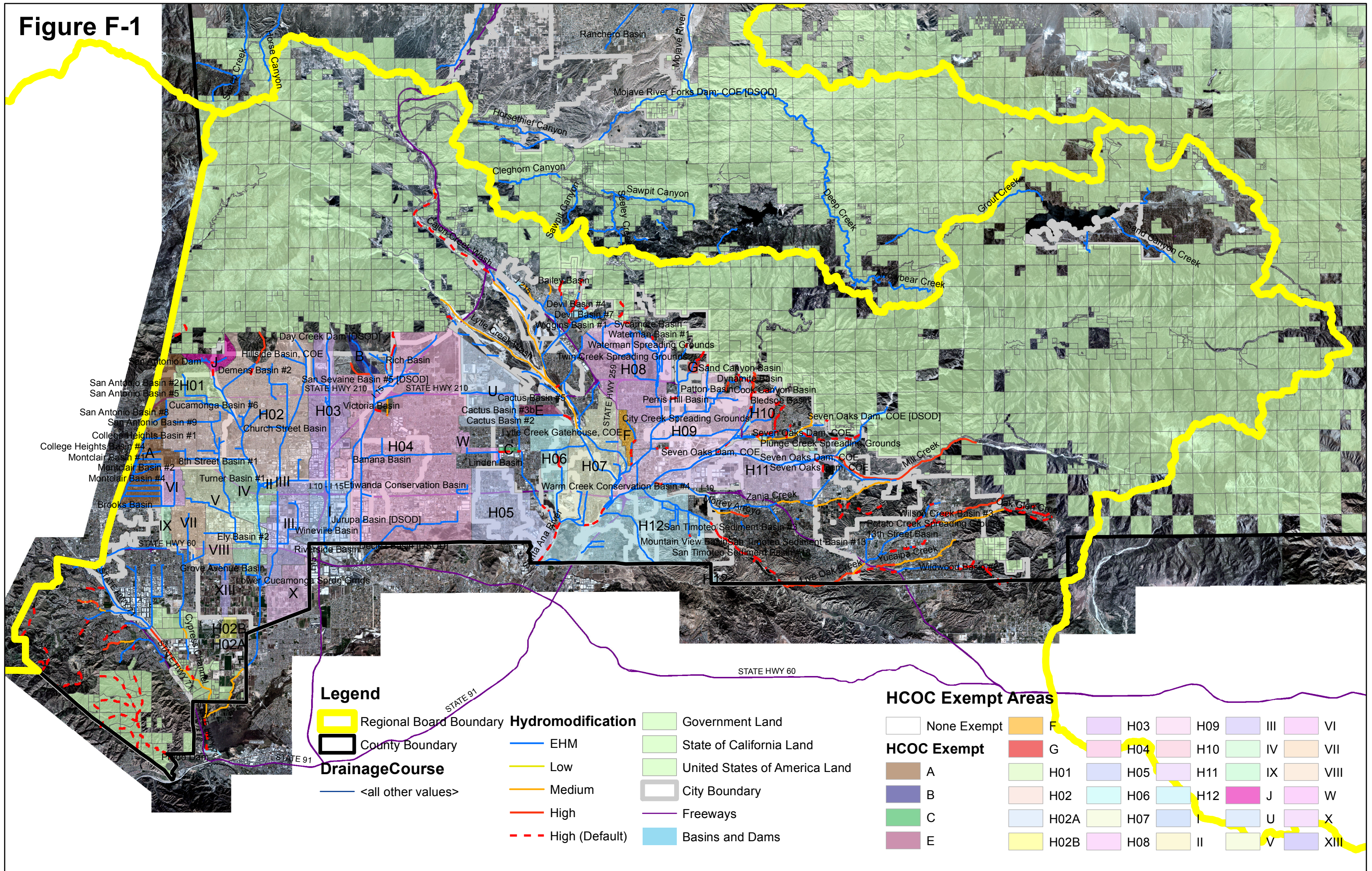


Figure F-1



Legend

- Regional Board Boundary
- County Boundary
- Drainage Course**
- <all other values>

Hydromodification

- EHM
- Low
- Medium
- High
- High (Default)

- Government Land
- State of California Land
- United States of America Land
- City Boundary
- Freeways
- Basins and Dams

HCOC Exempt Areas

- | | | | | | |
|-----------------------------------------------------------------------------------------------------------------------------------------------------------|----------------------------------------------------------------------------------------------------------------------------------------------------|---------------------------------------------------------------------------------------------------------------------------------------------------|---------------------------------------------------------------------------------------------------------------------------------------------------|---------------------------------------------------------------------------------------------------------------------------------------------------|----------------------------------------------------------------------------------------------------------------------------------------------------|
| None Exempt | F | H03 | H09 | III | VI |
| HCOC Exempt | G | H04 | H10 | IV | VII |
| A | H01 | H05 | H11 | IX | VIII |
| B | H02 | H06 | H12 | J | W |
| C | H02A | H07 | I | U | X |
| E | H02B | H08 | II | V | XIII |

Hydromodification

A.1 Hydrologic Conditions of Concern (HCOC) Analysis

HCOC Exemption:

1. **Sump Condition:** All downstream conveyance channel to an adequate sump (for example, Prado Dam, Santa Ana River, or other Lake, Reservoir or naturally erosion resistant feature) that will receive runoff from the project are engineered and regularly maintained to ensure design flow capacity; no sensitive stream habitat areas will be adversely affected; or are not identified on the Co-Permittees Hydromodification Sensitivity Maps.
2. **Pre = Post:** The runoff flow rate, volume and velocity for the post-development condition of the Priority Development Project do not exceed the pre-development (i.e, naturally occurring condition for the 2-year, 24-hour rainfall event utilizing latest San Bernardino County Hydrology Manual.
 - a. Submit a substantiated hydrologic analysis to justify your request.
3. **Diversion to Storage Area:** The drainage areas that divert to water storage areas which are considered as control/release point and utilized for water conservation.
 - a. See Appendix F for the HCOC Exemption Map and the on-line Watershed Geodatabase (<http://sbcounty.permitrack.com/wap>) for reference.
4. **Less than One Acre:** The Priority Development Project disturbs less than one acre. The Co-permittee has the discretion to require a Project Specific WQMP to address HCOCs on projects less than one acre on a case by case basis. The project disturbs less than one acre and is not part of a common plan of development.
5. **Built Out Area:** The contributing watershed area to which the project discharges has a developed area percentage greater than 90 percent.
 - a. See Appendix F for the HCOC Exemption Map and the on-line Watershed Geodatabase (<http://sbcounty.permitrack.com/wap>) for reference.

Summary of HCOC Exempted Area

	HCOC Exemption reasoning				
	1	2	3	4	5
Area					
A			X		X
B			X		
C					X
E			X		
F					X
G			X		X
H01	X		X		
H02	X		X		
H02A	X		X		
H02B			X		
H03			X		
H04	X		X		
H05	X				
H06			X		
H07	X				
H08	X		X		
H09	X				
H10	X		X		
H11	X		X		
H12	X				
J			X		
U			X		
W			X		
I			X		
II			X		
III					X
IV			X		X
V			X*		
VI					X
VII					X
VIII			X		
IX					X
X			X		
XIII			X		

*Detention/Conservation Basin