

High Desert Corridor
Joint Powers Authority

January 21, 2014

Meeting Materials

Item 9

Presentation on the EIS/R Alternatives Analyses

Los Angeles County
Metropolitan Transportation Authority

High Desert Corridor Joint Powers Authority

January 21, 2014



Metro



Project Area



Metro



Project Updates

High Speed Rail Alternative Analysis (AA)

- Introduction
- CEQA/NEPA AA Guidelines
- Regional Plans
- Mode Options
- Standard Sections
- Alignment Options
- Recommendations



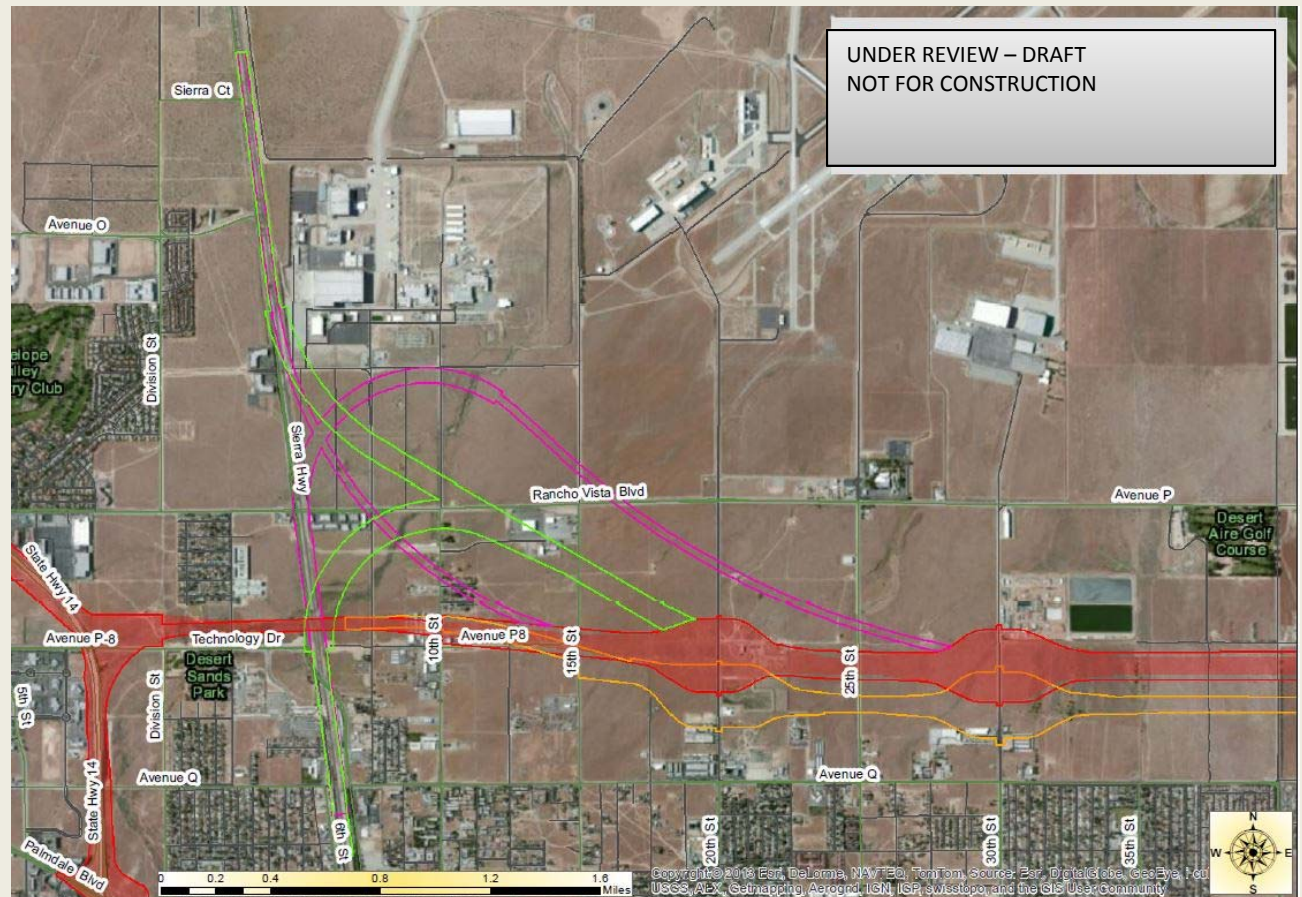
Metro



High Speed Rail Connections

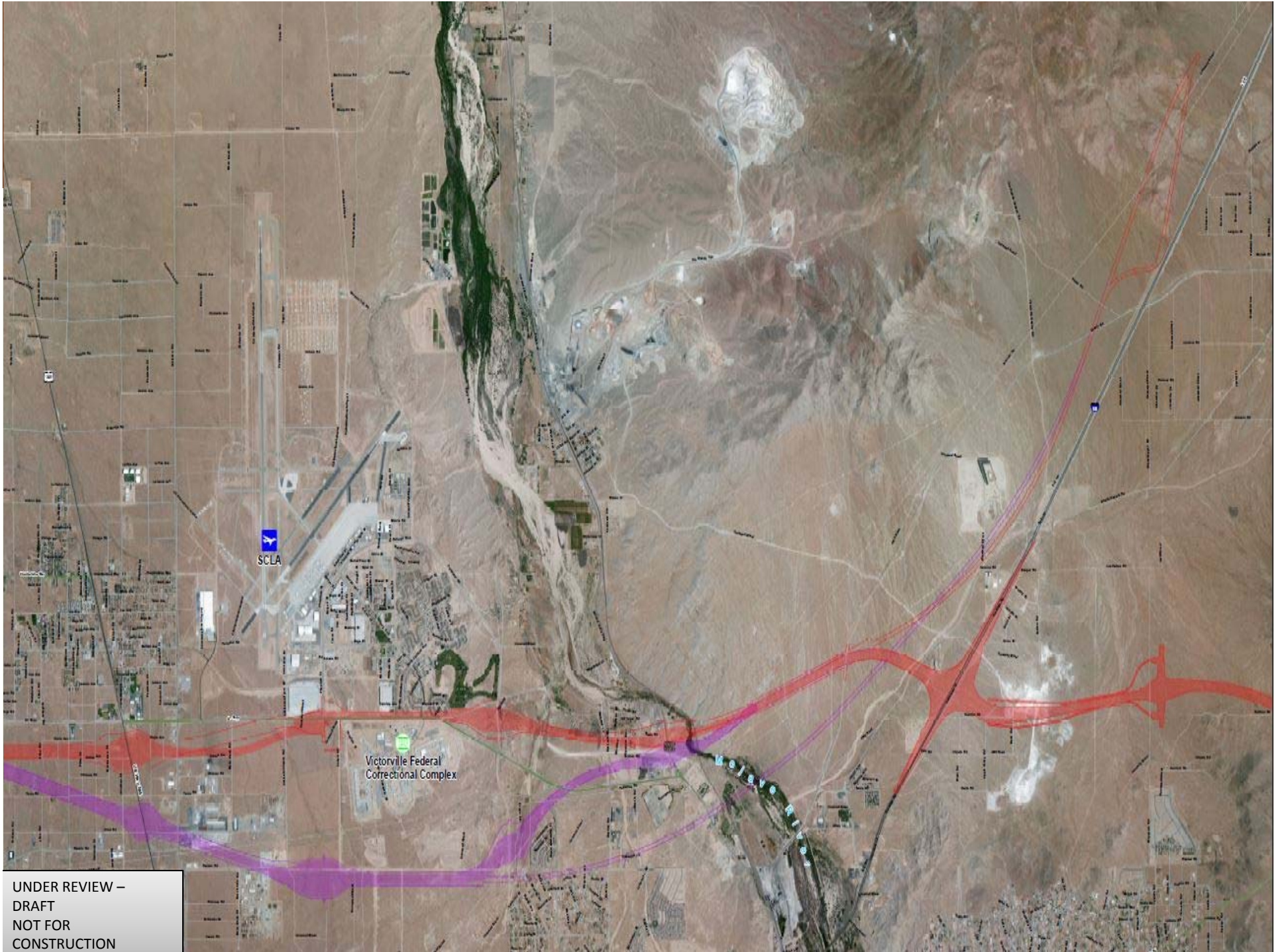
Palmdale Transportation Center

- Current rail service
 - Metrolink
- Planned rail service
 - CAHSR & HDC
- 2 proposed HDC rail connection options in Palmdale
- Proposed elements may include
 - Above, underground or at-grade
 - Speeds ranging from 60 to 110 mph



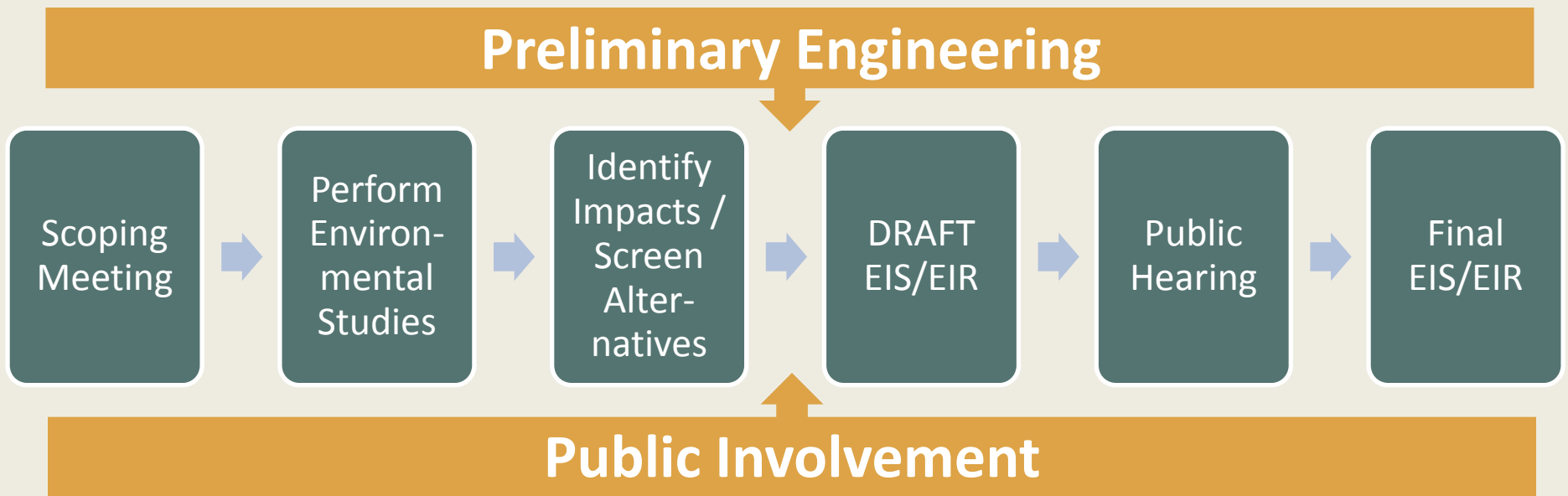
Metro





UNDER REVIEW –
DRAFT
NOT FOR
CONSTRUCTION

EIS/EIR Schedule



Metro



Outreach/Coordination

Outreach

- Public Outreach in July 2013
- Media/Elected Officials briefing
- Stakeholders

Coordination

- Federal Railroad Administration
- California High Speed Rail Authority
- XpressWest



Metro



How to Stay Involved

- Mail:
Robert Machuca, Metro Project Manager
One Gateway Plaza, MS 99-22-9
Los Angeles CA 90012
- Toll-free helpline: (888) 252-7433
- Email: comments to Metro, hdc@metro.net
- Project Websites:
 - Metro metro.net/hdc
 - Caltrans dot.ca.gov/dist07/travel/projects/138hdc
- Facebook: facebook.com/metrohdc
- Twitter: [@metrohdc](https://twitter.com/metrohdc)
- Interactive map: interactive.metro.net/projects/high-desert-corridor



Metro

