

CALIFORNIA HIGH-SPEED RAIL

PALMDALE TO LOS ANGELES PROJECT SECTION

High Desert Corridor JPA

Los Angeles, CA

June 2014



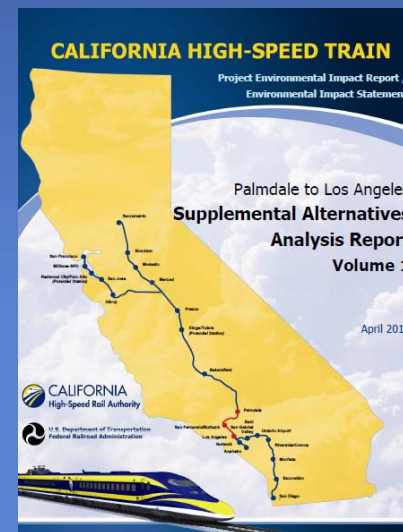
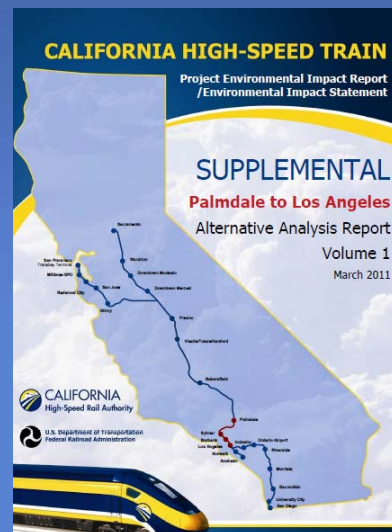
PALMDALE TO LOS ANGELES PROJECT SECTION REVIEW

- 60 Mile Route
- Connects the Antelope Valley to Downtown Los Angeles
- Includes the Initial Operating Section Terminus Defined in the 2014 Business Plan as the San Fernando Valley
- Three Stations – Palmdale, San Fernando Valley and Los Angeles Union Station



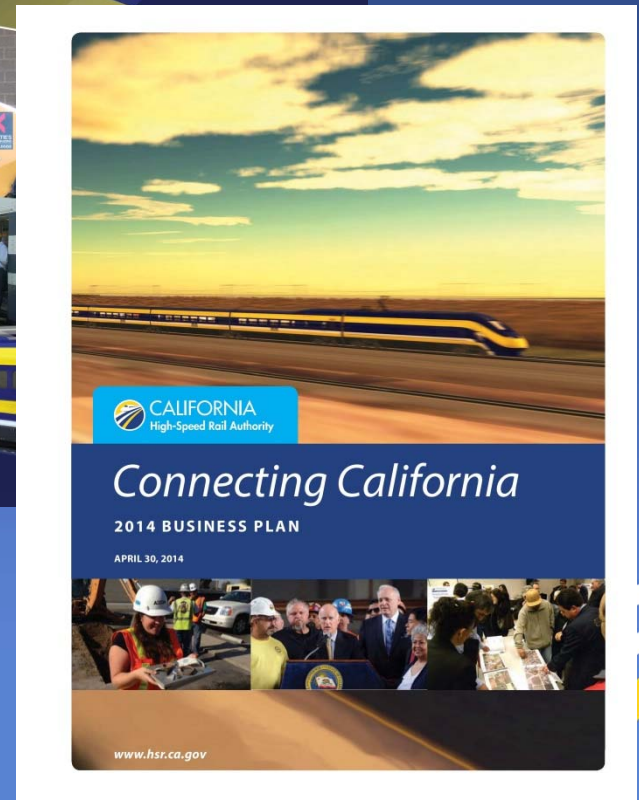
WHERE WE HAVE BEEN: P-LA SECTION TIMELINE

- Preliminary Studies and Evaluations
- Statewide Program Environmental Document (2005)
- Preliminary Alternatives Analysis (2010)
- Supplemental Alternatives Analysis (2011)
- Supplemental Alternatives Analysis (2012)
- Supplemental Alternative Analysis (2014)



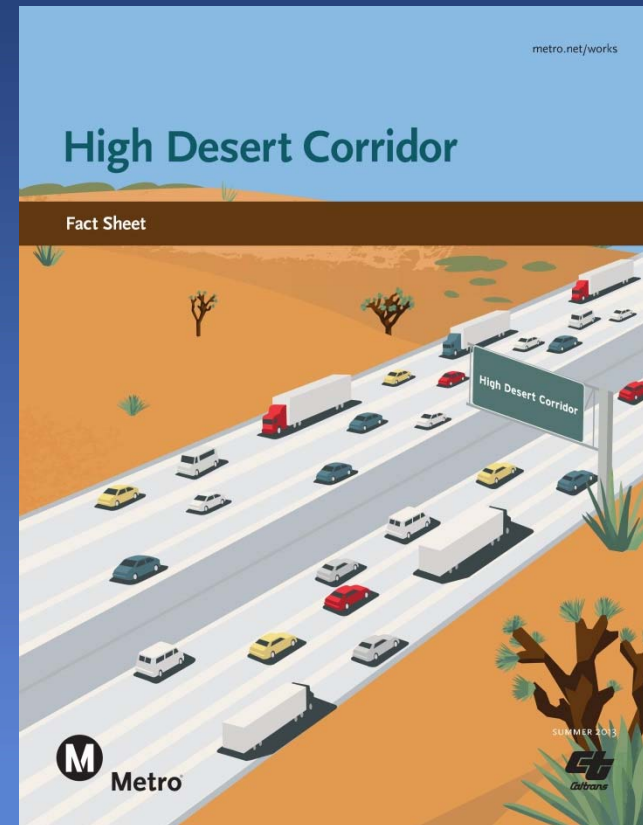
POST 2012 BUSINESS PLAN PRIORITIES

- 2012 SAA Work Completed Prior to Release of 2012 Business Plan
- Updated Approach:
 - Statewide Rail Modernization
 - Connectivity & Blended Service
 - Initial Operating Section to San Fernando Valley
 - Increased Emphasis on Stakeholder Engagement
 - Focus on bringing High-Speed Rail to Southern California



WHAT WE SAID IN FALL 2013: FRESH LOOK AT 2012 SAA

- Re-evaluate Potential Station Locations
 - Palmdale
 - San Fernando Valley
- Validate Stakeholder Feedback and Operational Requirements
 - Refinements Across the Alignment
- Address New Projects
- Bring High-Speed Rail to SoCal Faster
 - Environmental Document Strategy



PROPOSED PALMDALE STATION LOCATION

- Station Considerations
 - Program Objectives
 - Connectivity
 - Ridership
 - Regional Plans
 - Land Use / TOD
 - Stakeholder / Community Input
- Palmdale Transportation Center
- Connectivity with Metrolink
- What's New: High Desert Corridor, Palmdale Transit Village



PROPOSED SAN FERNANDO VALLEY STATION LOCATION

- Burbank
- Connectivity
 - Rail to Air
 - Rail to Rail
 - Rail to Transit
- Ridership
- Access to Ventura Line, Antelope Valley Line
- What's New: Hollywood Way Metrolink Station, RITC, Link Burbank



VALIDATE STAKEHOLDER FEEDBACK AND OPERATIONAL REQUIREMENTS

- Maximize System Operations
 - Geometric Refinement to Increase Speed and Ride Quality
- Minimize Impacts
 - Communities
 - Natural Resources
 - Planned Projects and Development



ADDRESS NEW PROJECTS IN THE CORRIDOR

- Refined Approach to Union Station
- Coordination with LA-A Section, LA Union Station Master Plan, and SCRIP



PROJECT MEETINGS AND UPDATES SINCE FALL 2013

- Federal, State, and Local Elected Officials and Staff
- Transportation Agencies/Providers: Metro, Caltrans, LA DOT, AVTA, BNSF, Metrolink, LOSSAN
- County of Los Angeles and Cities of Palmdale, Santa Clarita, San Fernando, Burbank, Glendale and Los Angeles
- Technical Working Groups in Downtown Los Angeles, Burbank, San Fernando, Santa Clarita, Acton and Agua Dulce
- Presentations to Local Community Groups

COMMUNITY MEETINGS SINCE FALL 2013

- Five Spring Community Meetings
 - San Fernando
 - Los Angeles Union Station
 - Burbank
 - Palmdale
 - Santa Clarita
- Over 400 People Attended



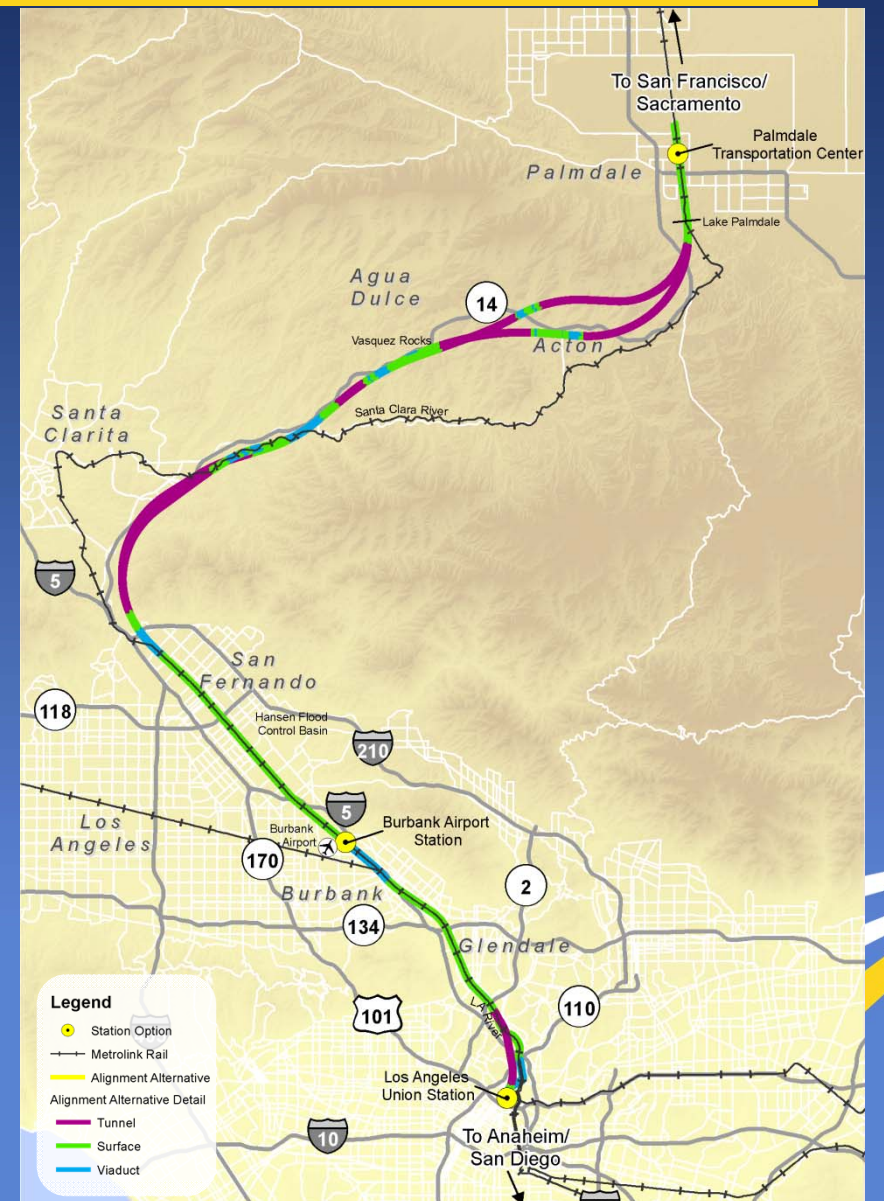
FEEDBACK TO DATE

- General Support for the Project
- Alternatives Under Consideration and Impacts at Specific Locations
- Process and Schedule
- Encourage Active Transit, Connectivity, Mobility Improvements
- Environmental, Noise, Community, Health Concerns
- Strong Support for Stations at PTC and Bob Hope Airport
- Strong Support for Study of Additional Ideas



RESULTS OF EVALUATION, SUPPORTED BY FEEDBACK

- Addressed Station Locations
 - Palmdale
 - San Fernando Valley
- Validated Stakeholder Feedback and Operational Requirements
 - Refinements Across the Alignment
- Addressed New Projects
- Updated Environmental Document Strategy
- Continued Evaluation
 - Nothing Final until Env. Process Complete



COMPLETED AND PLANNED ACTIVITIES

- **Completed**

- Robust Stakeholder Engagement
- First Round of Community Meetings
- Alignment Updates
- SAA Update

- **Summer 2014**

- Evaluate New Ideas
- Continue Project Meetings
- Conduct MORE Community Meetings

- **Fall 2014**

- Board Update on Alternatives
- Begin Environmental Analysis and Draft Environmental Document
- Continue Project Meetings
- Conduct MORE Community Meetings

- **2015 and Beyond**

- Release Draft and Final Environmental Document
- Complete Connectivity and MOU Programs
- Continue Project Meetings
- Conduct MORE Community Meetings

THANK YOU