

Regional Rail

Update

High Desert Corridor JPA
June 9, 2014



Regional Rail Corridors

- > Manage more than 165 miles of R/W in L.A. County
- > CHSRA Initial Operating Segment in 2022.
- > Connections to:
 - > Amtrak
 - > Metrolink
 - > CHSRA
 - > HDC



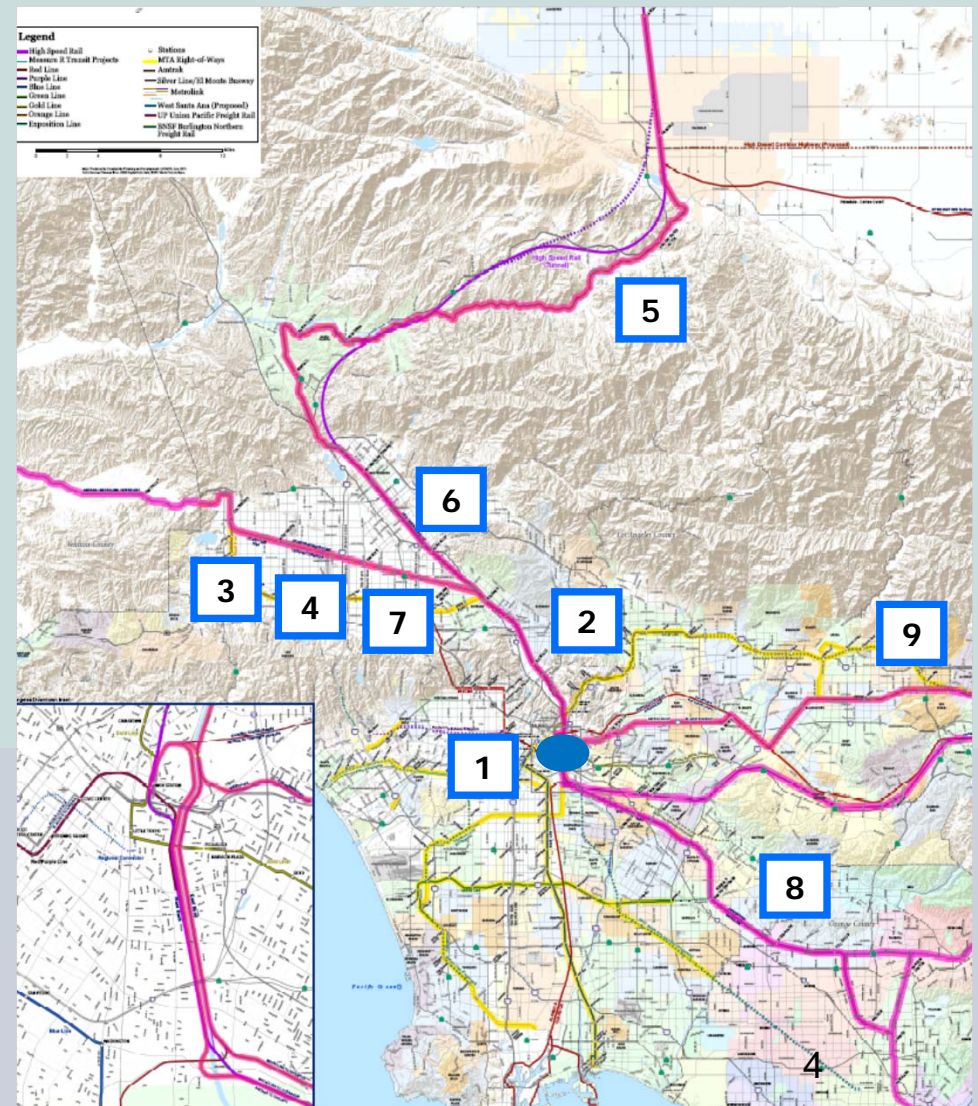
Regional Rail Capital Program

- > Advancing projects address the following:
 - > Grade Crossing and Corridor Safety on Metro owned right-of-way.
 - > Capacity.
 - > Community needs.
- > Advancing these projects:
 - > Facilitates the high speed rail MOU.
 - > Develops programs that are attractive for other sources of funding.
 - > Benefits communities throughout L.A. County.
 - > Benefits all passengers traveling within L.A. County.

L.A. County Regional Rail Projects

1. SCRIP *
2. Doran St. Grade Separation *
3. Raymer to Bernson Second Track *
4. Van Nuys Second Platform *
5. Vincent Grade Siding and Platform *
6. Bob Hope Airport/Hollywood Way Station *
7. Bob Hope Airport Station Pedestrian Overpass
8. Rosecrans/Marquardt Grade Separation
9. CP White to Lone Hill Env.

* Denotes projects in progress



Southern California Regional Interconnector Project

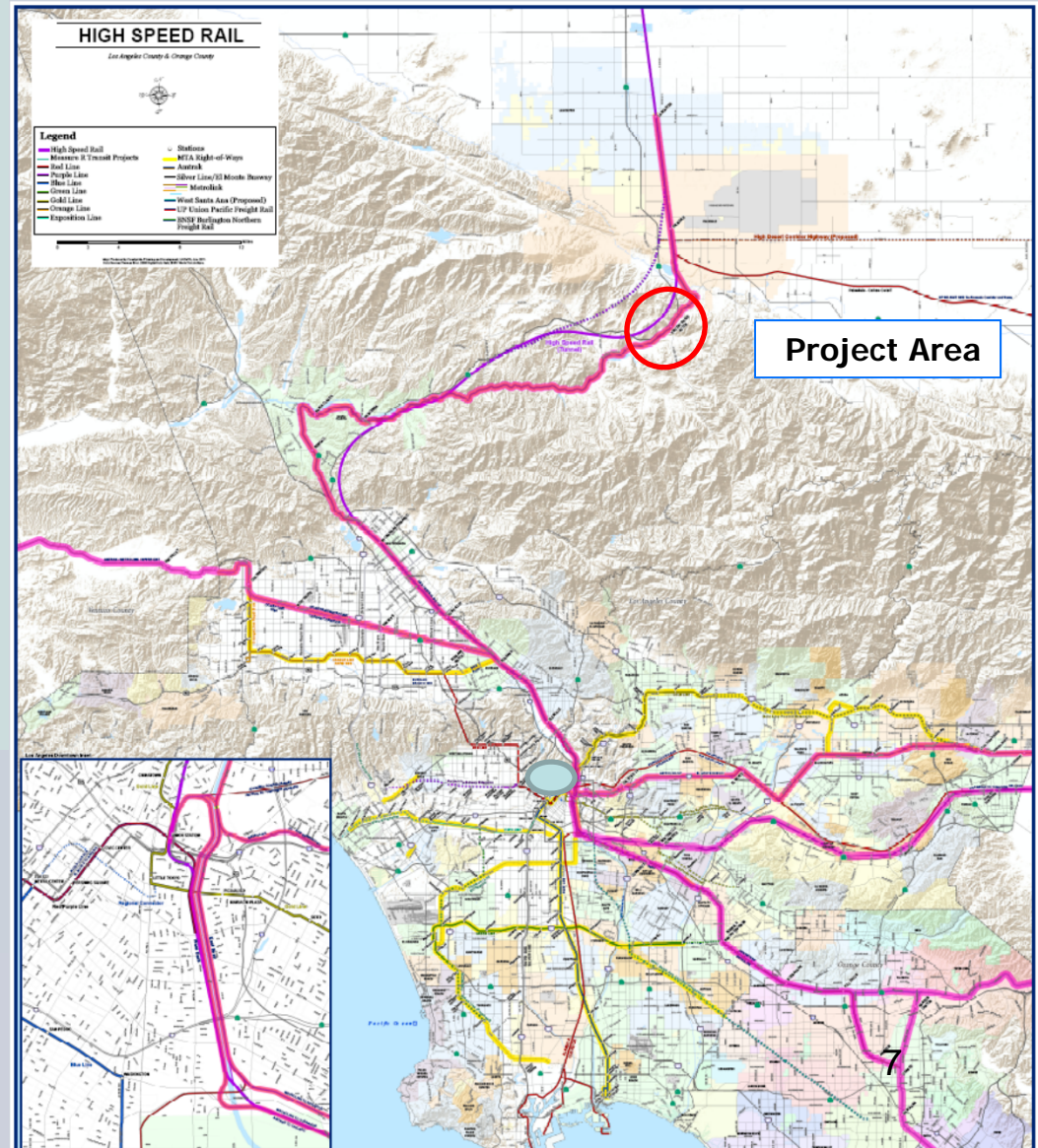
- > Extends at least four LAUS platform tracks to exit at the south end of the yard.
- > Increases station capacity by 40% - 50%.
- > Reduces GHG by 44%.
- > Creates operational flexibility.
- > PM/CM opportunity Fall 2014 that will include:
 - > Management
 - > Engineering support
 - > CM support

Southern California Regional Interconnector Project



Vincent Grade Station

- > Adds a second platform.
- > Adds 4000 feet to siding.
- > 50% funding through TCIF.
- > Led by Metrolink.
- > PS&E at 100%.
- > Construction will begin 2014.

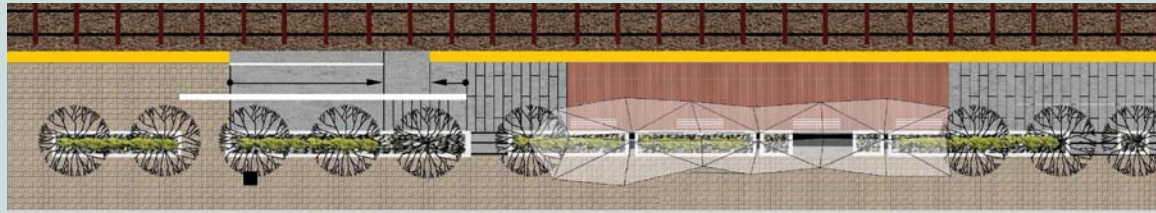


Bob Hope Airport Station

New station on the Metrolink Antelope Valley Line. This provides a north county connection to the airport.

- > Funded by Measure R and a federal grant.
- > Partnering with the airport.
- > Will be served by shuttle busses between the station and RITC.
- > Substantial completion date is January 2015.

Bob Hope Airport Hollywood Way Station



Bob Hope Airport Pedestrian Bridge

Extends the elevated walkway from the Regional Intermodal Transportation Center to the existing Burbank Airport Station.

- > Metro awarded a state STIP allocation to connect the Regional Intermodal Transportation Center (RITC) with the existing Bob Hope Airport Station.
- > \$7M is to be allocated for this project.
- > The Regional Rail team will be working with the Airport and Metrolink to develop this project.
- > An RFP for engineering is expected Summer 2014.

Bob Hope Airport Pedestrian Bridge



L. A. County Grade Crossing and Corridor Safety Program

- > Examine 111 at-grade crossings.
- > Develop an overall strategy to corridor solutions based on engineering, education, and enforcement.
- > Multi-phased program.
- > Extensive outreach to the communities.
- > Establish funding strategies to address crossing and corridor issues.
- > RFP in Summer 2014.
- > Will identify use of four Project Study Reports.

What is in the Future?

- > Develop an L.A. County rail program.
 - > AVL study,
 - > San Bernardino Line study,
 - > Grade crossing and corridor safety.
- > Advance projects and programs that:
 - > Enhance capacity,
 - > Improve mobility for the region,
 - > Provide safety benefits.
- > Establish the programming need in L.A. County:
 - > Measure R,
 - > Grade crossing funding programs,
 - > Other sources.