

High Desert Corridor
Joint Powers Authority

October 11, 2017

Meeting Materials

Item 8

Presentation from California High Speed Rail
on Status of Project



CALIFORNIA
High-Speed Rail Authority

CONNECTING CALIFORNIA

Michelle Boehm

Southern California Regional Director

October 11, 2017



HIGH-SPEED RAIL: Around the World

- 12 Countries with High-Speed Rail
- Over 3,600 High-Speed Rail Train Sets
- Over 18,500 Miles of High-Speed Rail
- 1.6 Billion Annual Passengers
- High-Speed Rail first introduced in Japan in 1960s



HIGH-SPEED RAIL: Connecting California



Increase Mobility



Needed Alternative



Better Air Quality

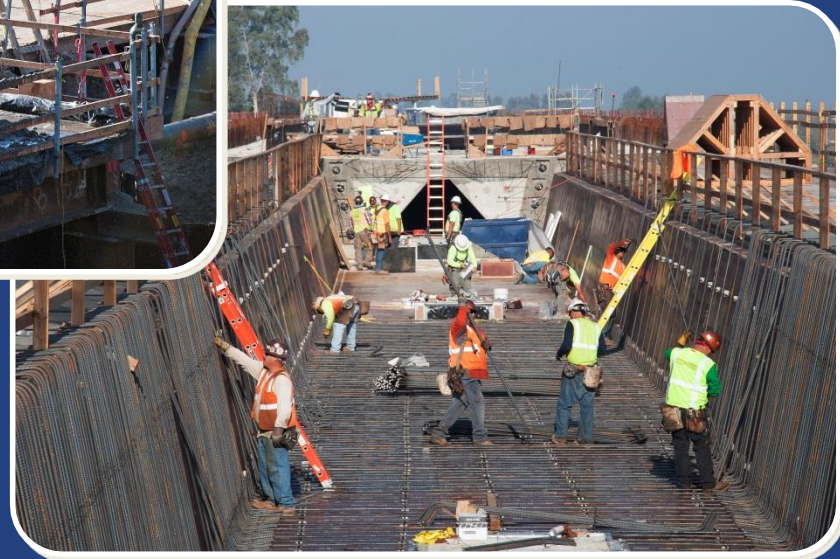


Job Growth

HIGH-SPEED RAIL: It's Happening!



- Approximately 119 Miles
- Madera to North of Bakersfield
- Approximately \$3 Billion Investment



CONNECTING CALIFORNIA:

HSR Stations in Top 10 CA Cities (by population)

Rank	City	County	Population	Planned HSR Station?
1	Los Angeles	Los Angeles	4,030,904	YES
2	San Diego	San Diego	1,391,676	YES
3	San Jose	Santa Clara	1,042,094	YES
4	San Francisco	San Francisco	866,583	YES
5	Fresno	Fresno	520,453	YES
6	Sacramento	Sacramento	485,683	YES
7	Long Beach	Los Angeles	484,958	NO
8	Oakland	Alameda	422,856	NO
9	Bakersfield	Kern	379,110	YES
10	Anaheim	Orange	358,136	YES
HSR TOTALS	Population Equivalent to one of the <u>Largest States in the Country</u>		9,982,453	8 of 10

HIGH-SPEED RAIL: Helping Shape Cities

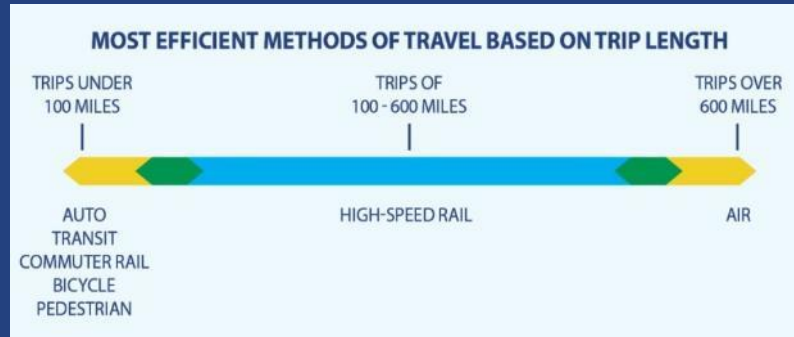
- **Ties Economies Together**
 - San Jose to Fresno = 60 Minutes
 - Bakersfield to Los Angeles = 60 Minutes
 - San Francisco to Los Angeles = 2 Hours and 40 Minutes
- **Connects With and Reinforces Local Mobility**
- **Foundation for Sustainable Growth**
- **Opportunities for Revitalization in Downtown Cores**



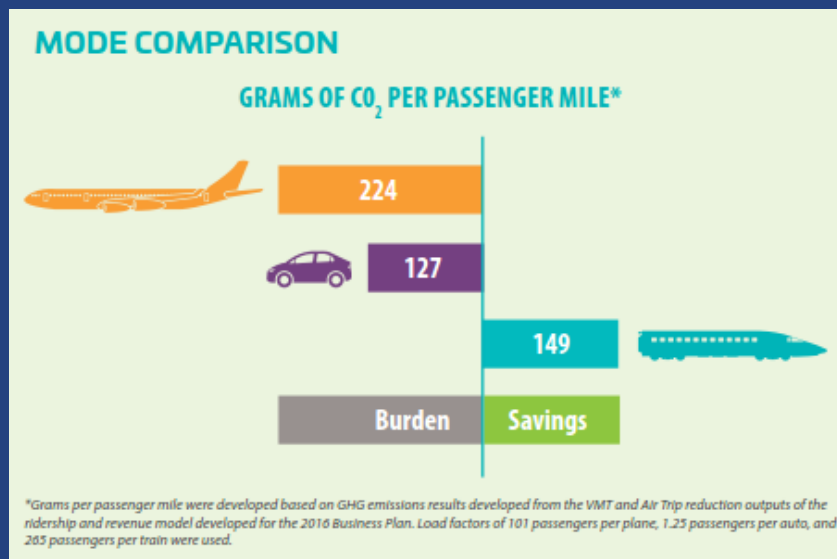
HIGH-SPEED RAIL IS BEST IN CLASS:

More Efficient, Sustainable Alternative

- Fills a Gap In California's Transportation System



- Sets a New, Green Standard for Travel



CONNECTING CALIFORNIA: Southern California

- **Connections within Southern California**
 - Palmdale to Burbank = 15-20 Minutes
 - Burbank to LAUS = 10 Minutes
 - LAUS to Anaheim = 30 Minutes
 - LAUS to San Diego = 80 Minutes
- **Closes Passenger Rail Gap between Central Valley and Southern California**
- **Multi-Modal Transportation Hubs**
 - Palmdale Transportation Center
 - Burbank
 - LA Union Station
 - ARTIC (Anaheim)



CONNECTING CALIFORNIA: Early Investment Projects

- **Short-Term Benefits: Safety, Connectivity/Capacity, Air Quality**
 - » **LA Metro:** Regional Connector in Downtown LA
 - » **Metrolink:** Cleaner, faster trains
 - » **San Diego MTS:** Modernize Blue Line Light Rail
 - » **Metrolink/North County Transit District:** Positive Train Control
- **Mid-Term Benefits: Improved Air Quality, Connectivity/Capacity and Phasing**
 - » **Regional Projects** – Link US (formerly SCRIP) benefits regional rail including Metrolink and Amtrak
 - » **Local Projects** – Grade separations and operational improvements to support integrated regional rail network



HIGH-SPEED RAIL: Economic Output

Indirect Effects

Concrete
Steel
Supplies
Transport
Computers
Parts
Office Supplies
And more...



Direct Spending

Contractors

- Construction workers' salaries
- Manufacturing, production, construction

Employees

- Salaries/rent/other expenses



Induced Effects

Housing
Groceries
Retail
Recreation
And more...



HIGH-SPEED RAIL: California Economic Impacts



**JOB-YEARS OF
EMPLOYMENT**

19,900 - 23,600



**LABOR
INCOME**

\$1.38B - \$1.68B



**ECONOMIC
OUTPUT**

\$3.5B - \$4.1B

HIGH-SPEED RAIL: Regional Economic Impacts



SMALL BUSINESS PROGRAM

SMALL BUSINESS PARTICIPATION

OF JUNE 2017

407 Certified Small Businesses
working on the high-speed
rail program statewide

116 Certified Disadvantaged Business Enterprises

45 Certified Disabled Veteran Business Enterprises

NORTHERN CALIFORNIA:

159 Certified
Small
Businesses

CENTRAL VALLEY:

108 Certified
Small
Businesses

SOUTHERN CALIFORNIA:

127 Certified
Small
Businesses

OUTSIDE OF CALIFORNIA:

13 Certified
Small
Businesses

- **30% Goal for Small Business Participation**
 - » 10% Disadvantaged Business Enterprises (DBE)
 - » 3% Disabled Veteran Business Enterprises (DVBE)

HIGH-SPEED RAIL: Creating Jobs & Workforce Development

- Targeting: California
- Construction: Direct, Indirect Jobs in Hard-Hit Sectors
- **Over 1368** Construction Workers Dispatched in Central Valley
- **Over 500** Pre-Apprentice Graduates



PROGRAM TIMELINE *



* Subject to Change

** EIR/EIS = Environmental Impact Report / Environmental Impact Statement

In compliance with National Environmental Policy Act & California Environmental Quality Act (NEPA / CEQA)



CONSTRUCTION *update*

SEPTEMBER 2017

A LOOK FROM ABOVE

The magnitude of the projects under construction are sometimes so large you can't truly appreciate them from the ground. Every few months a member of our team is going up in a plane to take pictures and you can see just how impressive the projects are from the air. We have selected some of the best aerial shots from the work underway in Construction Package 1 to share here in this update, but you can see more of these aerial photos at BuildHSR.com.



SAN JOAQUIN RIVER VIADUCT



CEDAR VIADUCT

The California High-Speed Rail Authority and the City of Fresno held a ribbon-cutting ceremony on August 4th to commemorate the opening of the new and improved Tuolumne Street Bridge in downtown Fresno. In the latest construction update, see more photos from the event and find a link to a video highlighting the day.



BUILDHSR.COM



STAY INVOLVED

Michelle Boehm

Southern California Regional Director

Michelle.boehm@hsr.ca.gov

Southern California Regional Office

California High-Speed Rail Authority

700 Alameda Street, Third Floor

Los Angeles, CA 90012

www.hsr.ca.gov



[instagram.com/cahsra](https://www.instagram.com/cahsra)



[facebook.com/CaliforniaHighSpeedRail](https://www.facebook.com/CaliforniaHighSpeedRail)



twitter.com/cahsra



[youtube.com/user/CAHighSpeedRail](https://www.youtube.com/user/CAHighSpeedRail)